

Jan-Feb 2015

Friends of Edithvale – Seaford Wetlands Inc.



Number 139



Clamorous Reed-Warbler

Inside this issue:

President's Report	1
Self Guided Walk Brochure	3
FESWI Open Day	4
My Say	5

Wetland Warbler

PRESIDENT'S REPORT

2014 and onto to 2015

Philippa Bailey
President FESWI

The year past and moving into the new year

FESWI COMMITTEE AND VOLUNTEERS

The FESWI committee started off the year 2014 quite buoyant after the 25th anniversary celebrations at the end of 2013, with the chance to meet old friends and supporters of FESWI again.

Following the AGM in 2014 the committee members remained the same, with the addition of Clare McPhee. Thank you is never enough to acknowledge the commitment and hard work contributed by our committee, who enable FESWI to function in a vibrant way and protect our beloved wetlands!



Margaret Hunter has continued as secretary, keeping the business flowing and also leading a number of walks around the wetlands for community groups over the year.

Robin Clarey continues to produce an interesting newsletter regularly, and

has taken a leading role in challenging development around the wetlands.



Gwen Meadows, treasurer since 1999, retired at the AGM and her great contribution to FESWI was acknowledged. Gwen has been a FESWI member since 1989.

Matt Mitchell has looked after the FESWI website, assisted at activities and represented FESWI on committees. **Rex Chugg** has continued to lead tree planting and liaison at Seaford and kept an eye on the Edithvale revegetation area. **Kate Spillane** has coordinated the Discovery Centre open afternoons and liaised with Melbourne Water staff. **Sue Telfer** has represented FESWI at local events and **Clare McPhee** has been an enthusiastic Discovery Centre volunteer and brought new ideas to FESWI.

DUCK IN BREAK IN NO 2

Committee members and FESWI friends were quite shattered when a second break-in occurred at Duck In, late December. This time good detective work prevailed and the

FRIENDS OF EDITHVALE - SEAFORD WETLANDS INC.

Assoc No. A0017388A

ABN - 95 886 101 621

P O BOX 2031,
EDITHVALE VIC 3196

www.edithvale-seaford-wetlands.org

President Philippa Bailey
9786 1591
Vice President Robin Clarey
9786 2213
Secretary Margaret Hunter
9588 0867
Treasurer Sue Telfer

Committee

Rex Chugg
Matthew Mitchell
Kate Spillane
Sue Telfer

Seaford W/Bees Rex Chugg
9766 6056

D/C Roster Kate Spillane
9773 0224

Bird Hide Co-ordinator
Not Applicable

Guided Tours Marg Hunter
9588 0867

Newsletter Robin Clarey
9786 2213

Warbler Collator
Cheryl Meier 97724484

Website
Matthew Mitchell

Membership Database
Chris Spencer 9786 1591

PRESIDENT'S REPORT CONT.

Continued from Page 1

culprits were caught and duly charged. Two young men have been to court. Both sent apologies to the FESWI website and one young man provided \$100 restitution. We have been left financially depleted from the two break-ins.

The September damage required repair to the windows of nearly \$3,000, which were not covered by insurance, and the second break-in cost \$300 for repairs. On a positive note, Kingston Council contractors painted out the graffiti, after initially refusing to do so. Essential safety measure compliance requires that 4 checks occur each year at the cost of \$1500. Melbourne Water has paid for the first year of compliance.

EVENTS: World Wetlands Day at the Discovery Centre

FESWI participated in a postponed event. (Extreme hot weather necessitated cancellation on the week of World Wetlands Day.) Margaret conducted some walks and there was much interest shown in the wetlands from visitors to the event.

Dry Walk through Edithvale South

The walk was conducted on March 30th with a good turn-up. Les took the group through the newly slashed phragmites and the kangaroos were sighted. Melbourne Water has introduced a new system to ensure that anyone entering the wetlands notifies the ranger in advance.

Edithvale Wetland Walks

Over the year several different groups have visited Edithvale Wetlands and been shown around the Discovery Centre. Margaret has been a stalwart in organising and running these visits.

Planning Opposition

Robin initiated a successful opposition campaign to a proposed 2 – storey development at 70 Armstrongs Rd, which would have set a precedent for overdevelopment near the Seaford wetlands. Robin and Philippa, Faye and Helen, attended the Frankston council meeting where the proposal was totally rejected. The battle was won, but no doubt the war will continue!

Discovery Centre

Kate has managed the roster for the FESWI twice-monthly opening at the Discovery Centre. Many

thanks to our group of loyal volunteers who turn up each month. It is a great opportunity to engage with the community, but we all know that it is not quite the same as being on hide duty. Numbers have continued to average about 60 visitors on an open day.

Bird Hide

I am pleased to report that the bird hide rejuvenation is progressing well. A number of factors have contributed to move this project along. First and foremost, Alison Kuiter has been tirelessly using her considerable networks to provide new initiatives to inform the repair work. Thanks must go to Bill Wallace from BirdLife Australia, who advised us in the early stages of negotiation with Melbourne Water and provided technical expertise. Melbourne Water director Greg Bain and wetlands liaison officer Paul Rees have met regularly with Alison and myself and have maintained an encouraging position. Major progress has been achieved through the appointment of Brian Lowe of local firm Lowe Bros. as the project manager. Melbourne Water has contributed \$3,000 for surveying and the planning permit. We are nearly ready to submit the request to repair the bird hide as a planning application and are waiting on final quotes for the overall cost. FESWI are looking for a grant or philanthropic contribution to pay for the repairs. Discussions have commenced regarding future licensing agreements with Melbourne water.

COMMUNITY EVENTS

Tree planting has occurred once a month and appreciation of the volunteers who regularly participate in this activity is noted. This year Rex and his team have planted nearly 700 understorey plants.

FESWI was involved with the **Seaford North Primary School environment activity**, and our big event for the year was the **Edithvale Wetlands Open Day on November 16th** (See Page 4). Robin and Philippa attended a Seaford Farmers market to promote the event.

Seaford Fun Run on November 23rd.

The FESWI committee was opposed to the planned fun run and voiced our concerns to the organisers, Melbourne Water and City of Frankston representatives. The run was even sanctioned by the Federal environment protection body. It was run during the migratory bird season and we felt the event should be located somewhere else. The committee decided to have a presence at the event in order to inform the community about the fragility of the wetlands. However after

PRESIDENT'S REPORT CONT.

attending, we felt that it was not quite as intrusive as first feared.

The Edithvale walks brochure, funded by the City of Kingston was launched at the Open Day. This was funded via a City of Kingston grant, for which FESWI is most grateful!

NETWORKS

FESWI has continued to attend the ESW Community Liaison Committee, the ETP committee, the Port Phillip conservation committee, and remain members of the Frankston Environmental Friends Network.

GWEN MEADOWS

A special thank you to our retiring treasurer Gwen, who has managed FESWI financial affairs for many years and whose work is much appreciated. Happy retirement Gwen!

ONWARDS NOW TO 2015

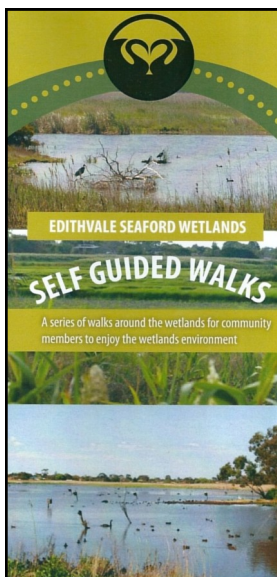
Will you help the Friends take on the challenges of the new year?



Discovery Centre volunteers get together at a Christmas Party (2nd & 4th Sundays/month)



Working Bee restarted in February at Seaford Wetlands (1st Sunday of each month)



Self Guided Walk brochure around Edithvale, produced by FESWI now available.

Oops!



In the last edition of Wetland Warbler we featured this bird and incorrectly identified it as a Curlew Sandpiper. The bird is in fact a Marsh, not a Curlew, Sandpiper, a rather rarer species.

Thanks for the feed back Mike Carter

FESWI OPEN DAY AT EDITHVALE

FESWI had an Open Day At Duck In in November of last year.

The weather was horrible, raining on and off most of the day.

The turn out was disappointing, perhaps the result of a combination of poor weather and an isolated site.

FESWI will look into combining with another group (school or other environmental organization) for our next event to improve advertising, visibility and easy access.



Rosemary West officiates at the launching of FESWI's Self Guided Walk brochure.



Musicians provide ambient music.



FESWI's maze to encourage children to learn about, and become involved with plants.



Representatives from the *City of Kingston* and *Coast Care* provide great displays.



Plant display suggesting what to replace weed plants with.



The 'Tram Conductor' providing bird information and picture cards to children.

My Say

SLEEPING AT THE WHEEL

Robin Clarey



I'm beginning to wonder if we Australians are seriously sleeping at the wheel.

Marx once famously wrote that religion is the opium of the people. It seems to me that the modern day opiates are spectator sport, reality TV and the like whereby we become entranced, and allow ourselves to be lulled and beguiled into believing that 'God 's in His heaven—All 's right with the world!' (*Robert Browning*).

What's really happening in our world? Climate change; environmental degradation; massive over-population of the human species to the detriment and loss of other species (*How long before the spring becomes truly silent?*); the pursuit of endless (and unsustainable) economic growth; governmental interference by big business chasing bigger and bigger profits.

There needs to be a paradigm change in our way of thinking; a seismic shift in the way we order our society and organise our institutions. If everybody put one tenth (or even one twentieth) of the time and passion they put into spectator sport and other trance-inducing activities, into issues that really matter, think what we could achieve.

Up the revolution!



MOSQUITOS ON NOTICE



A mosquito program has been put in place to conduct monitoring and coordinate management actions to control mosquito outbreaks arising from MW owned waterways, support Customer and Community team with information, answer residents enquiries.

Seaford wetlands are one of the main targets of the mosquito program. The wetlands have been monitored in September and October 2014 and larvicide briquettes have been distributed in the Southern part of the wetlands. The briquettes mimic the mosquito juvenile hormone and disrupt the development of larvae and pupae in the water with minimal impact on other fauna. They act for up to 150 days.

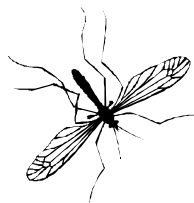
The Seaford wetland was monitored on the 19-20th January 2015. Almost no larvae and very low numbers of adults, less than 24 in each

trap were detected. This is despite significant amount of rainfall occurring in January and medical entomologist at the University of Sydney declaring that January weather constituted "the perfect storm" conditions for mosquito outbreaks

During the warm months of the year MW will monitor the wetlands monthly or more frequently, dependant on community concerns.

Activities will include:

- monitoring of adult mosquitos and larvae:
- adult mosquitos will be sent to the Department of Environment and Primary Industries (DEPI) labs for identification and examination for arboviruses inspections will assess the effect of rains on mosquito larvae numbers.



(Source: Melbourne Water website)

Corporate Members

Following is a list of our corporate members. Please give them your support.

Aspendale Primary School

Aspendale Gardens Primary School

Frank and Isobel Baguley's Nursery

Bird Life Australia

Bonbeach Primary School

Chelsea Heights Community Centre

Chelsea RSL

Edithvale Primary School

Frankston Primary School

Gales Marine Centre

Instant Garden Nurseries at Gardenworld Keysborough

Good Shepherd Aged Services – Mary Ville Hostel

Audrey Harding

Hasuval Engineering Service Pty Ltd

Tania Ireton

McDonald's Family Restaurant, Chelsea Heights

Melbourne Water, Waterways & Drainage

Mordialloc College

Mordialloc Primary School

April Nutter

Parkdale Secondary School

Peninsula Pedallers Inc

Presbyterian Ladies College

Ray White, Chelsea

Rotary Club of Aspendale

Seaford North Primary School

Seaford Park Primary School

Seaford Primary School

Soroptimist International of Brighton

St Anne's Primary School

St Joseph's School

St Louis de Montfort's

Treeplanters Nursery

Veitch & Co Pty Ltd



Melbourne Water

Production of this newsletter funded through

**PRINTED BY THE OFFICE OF
MARK DREYFUS, MHR FOR ISAACS**



**Friends of
Edithvale – Seaford
Wetlands Inc.**

If undeliverable please return to:
PO Box 2031
EDITHVALE 3196